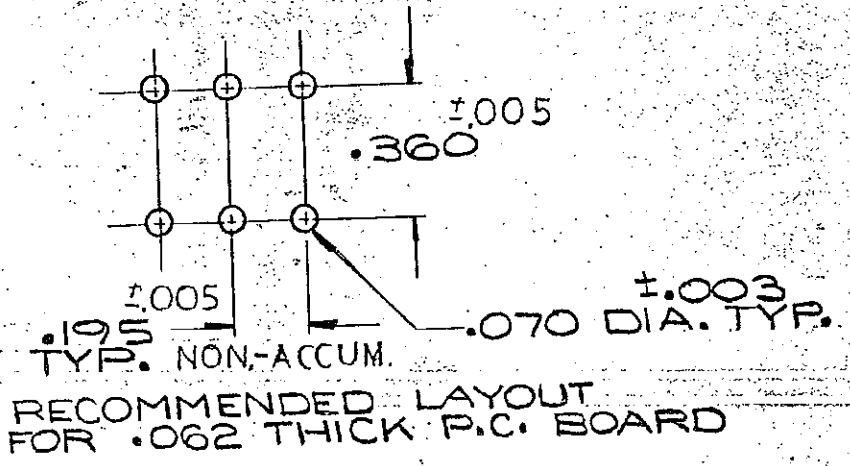
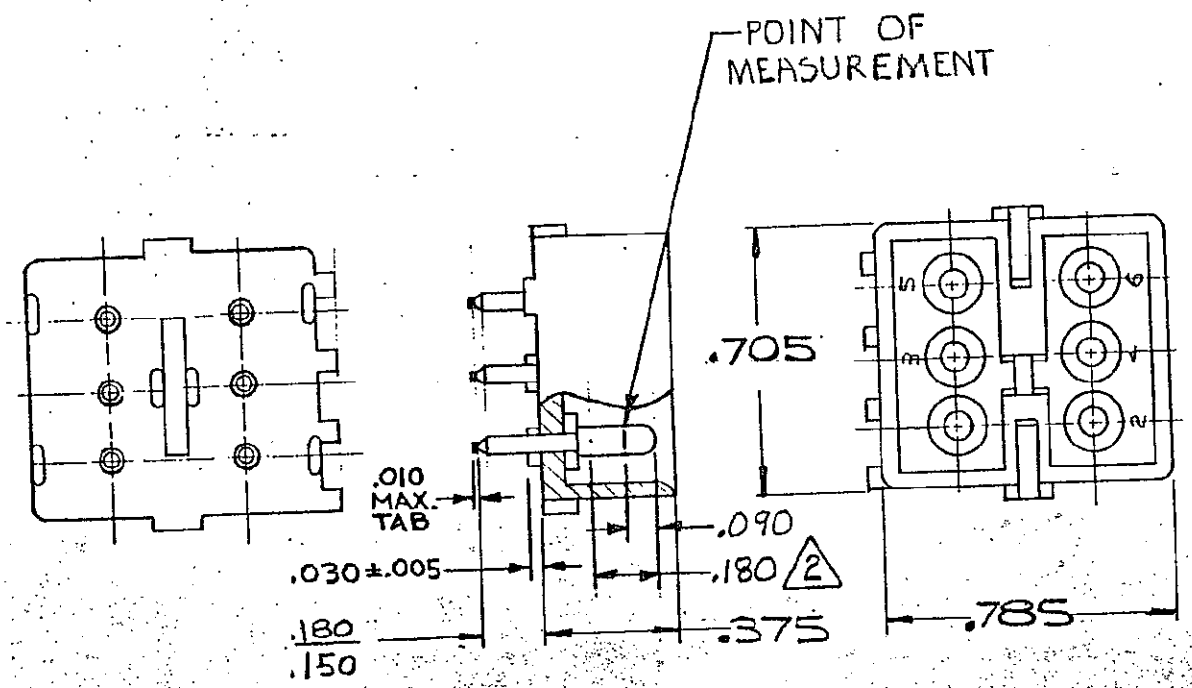


1. PARTS COMPLY WITH AMP SOLDERABILITY SPEC. NO. 109-11-3
2. CONTACT IS PLATED OVERALL WITH .000050 NICKEL, THEN .000030 GOLD OVER CONTACT LENGTH INDICATED AND MATTE TIN ON SOLDER TAIL END.



ASSEMBLY NO.	HSG. MATL.	COLOR	PIN MATL.	FINISH
2-380999-0	NYLON	NATURAL	COPPER ALLOY	GOLD
1-380999-0	NYLON	NATURAL	COPPER ALLOY	PRE-TIN

DIMENSIONS IN INCHES. DO NOT SCALE PRINT.

U OBS 2--5 PER ECN 0730-013194 JH RS 6-25-97 T OBS 1-1, 1-2, 3--0 PER ECN CM-2706 NG RS 8-9-92 S OBS 1-4, 1-5, 1-6, 1-9 PER CM 2213 TB RS 3/20/89 LTR REVISION RECORD DR CHK D/JE				NUMBER 380999				DWG SIZE		NUMBER		NAME		REMARKS		ITEM NO
REQUIRED PER ASSEMBLY																
© 1975 BY AMP INCORPORATED. ALL RIGHTS RESERVED. AMP PRODUCTS COVERED BY PATENTS AND/OR PATENTS PENDING.																
DR <i>D.J. Hynes</i> 3/20/73 CHK <i>L.M. Pollock</i> 3/13/73 DE <i>J. Kneller</i> 4-3-73 APP <i>J. Kneller</i> 4-3-73				MATERIAL AND FINISH SEE TABLE				AMP INCORPORATED HARRISBURG, PENNA.				CLASS		TYPE PIN HEADER		
WIRE-RANGE-INSULATION				TOLERANCE EXCEPT AS NOTED ± .015 ± 1° 0'		SCALE		LOC CM B		NO 380999		U				
NAME 6 CIRCUIT MATE-N-LOK P.C. BOARD HEADER																